



the **play inspection** company
the safest hands around playgrounds

Annual Inspection

Dyffryn Ardudwy and Talybont Community Council

Old Swings

Talybont, LL44 2HT



API Associate



Unit 5, Glenmore Business Park, Blackhill Road, Poole, Dorset, BH16 6NL
t- 01202 590675 f- 0870 428 3942 e- info@playinspections.co.uk

www.playinspections.co.uk

Report Preamble



Inspections are undertaken with reference to the standards listed in this preamble only; where no date for the standard is given it is assumed that the date of the standard will be that current at the time of inspection with the exception of where overlap periods are granted by the standards committee when standards are updated. All inspections are subject to our standard terms and conditions, a full copy of which can be downloaded from our website www.playinspections.co.uk. Other standards referenced within the listed standards do not form part of the inspection.

The following standards are relevant to all installations of equipment that are publicly accessible to users; this would include public parks, pay and play parks, schools, nurseries, public houses, holiday parks, indoor play centres, farm parks etc. All equipment used or employed in publicly accessible areas should meet with the requirements of BS EN 1176 (or other relevant standard listed below).

BS EN 1176 Parts 1, 2, 3, 4, 5, 6, 10 & 11 Playground equipment intended for permanent installation outdoors & indoors.

BS EN 1176 Part 7 is a code of practice provided by the standards organisation and is predominantly aimed at assisting owners or operators in the management of their recreational areas.

Domestic play equipment falls outside of the scope of BS EN 1176 and has its own standard (BS EN 71 Part 8 & 14). Where domestic equipment can be identified this will be acknowledged in the report but any comments concerning compliance within the inspection will still refer to BS EN 1176.

Other equipment that is not clearly identified as commercial or domestic (natural play, self-build equipment etc.) will be assessed for compliance with the relevant standard listed in this preamble.

NB: BS EN 1177 relates to methods of test for impact attenuating surfaces and can only be tested on site with specialist equipment. Such test results will only be indicative of the surface condition on the date of the test and not necessarily repeatable.

BS EN 15312 Multi use sports equipment

BS EN 14974 Wheeled sports equipment

BS EN 16630 Outdoor fitness equipment

BS EN 16899 Parkour equipment (plus RPII/API guidance notes)

Annual and Post Installation reports will take into consideration, compliance with current standards and defects related to maintenance and vandalism. The inspection will cover the general curtilage of the playground which if fenced will be all assets contained within the fence line, the fence and any gates into the area. If the area is not fenced the general curtilage is considered to be the equipment and up to 3.0 metres around. Operational inspections only take into consideration defects related to maintenance and vandalism. Routine visual inspections (if undertaken) relate only to the most obvious defects such as broken or missing parts, vandalism and issues created by severe weather conditions.

The inspection is non-dismantling and non-destructive; however, the inspector will undertake a manual test for stability and if equipment fails under manual load it is not fit for continued use (the client will be notified on the same day by phone and email if equipment fails during the inspection process).


The inspector will access all necessary standing surfaces on the equipment and assess all parts up to 2.5m above the standing surface. Where it is not possible to access parts of the equipment without employing an alternative means of access the report will record the action required by the client to ensure the continued safe use of the equipment. The owner/operator is responsible for the overall safety of the equipment and area. Inspectors are trained to use ladders and will use them where it is safe to do so, but if members of the public are present on site they will not be used to access the equipment.

The manufacturer/designer of the area should provide a 'design risk assessment' for the equipment and location in which the area is installed. The owner/operator should have a suitable and sufficient risk assessment in place for each area covering both the equipment assets and the location of the area.

References to weeds, planting or trees will only contain obvious hazards to users of the area such as dead branches, hostile planting, sharp protruding stems, overgrown or weed infested areas. No reference will be made to the relative or potential toxicity of any plant, tree or weed. We will not comment on the presence or otherwise of Japanese Knotweed. Presence of fungi will be noted if it is visible, but no comment made on its relative or potential toxicity.

The details contained within this report are a snapshot of the condition at the time of inspection only; suggested remedial actions are based on the knowledge and experience of the inspector and/or that of the inspection company. The advice of the manufacturer or a competent person should be sought at all times when undertaking repairs and/or modifications to equipment

Risk Assessment Matrix

			Scores in the report are multiplication factors of Likelihood x Severity					
			Severity>>					
Likelihood	Very High probability, if the situation is not addressed an accident is almost certain.	5	Very High	VL (5)	L (10)	M (15)	H (20)	VH (25)
	High probability an accident is probable without any added factor.	4	High	VL (4)	L (8)	M (12)	H (16)	H (20)
	Moderate probability an incident is foreseeable.	3	Moderate	VL (3)	L (6)	L (9)	M (12)	M (15)
	Some probability, requires a combination of factors to take place.	2	Low	VL (2)	VL (4)	L (6)	L (8)	L (10)
	No significant probability; lightning strike, freak accident.	1	Very Low	VL (1)	VL (2)	VL (3)	VL (4)	VL (5)
			Very Low	Low	Moderate	High	Very High	
			1	2	3	4	5	
			No injury likely e.g. damaged or soiled clothing, minor bruising, grazes	Minor injury, laceration or bruising requiring first aid only	Injury requiring medical intervention e.g. cuts requiring stitches	Serious injury including concussions or fracture of long bones	Severe injury involving a potential life changing injury or fatality	
			Severity>>					
			<p>Note 1: The total risk scores included within our reports are a multiplication factor of the calculated Likelihood and Severity of each finding. Both Likelihood and Severity are given a number between 1 - 5 as shown on the matrix above and these two numbers are then multiplied together to give the total risk score that is shown against defects on the report. Total risk scores can be divided in both directions, ie. a total risk score of 12 could be a Likelihood (3) x Severity (4) or Likelihood (4) x Severity (3).</p> <p>Note2: When we inspect we only see a snapshot of the current condition of the equipment. It is the operators responsibility to ensure that there is a continuing level of maintenance to keep the equipment in good working order and the site fit for use.</p>					

Equipment has been assessed to the following standards where relevant:

- BS EN 1176 Parts 1-11 (Playground equipment and surfacing)
- BS EN 14974 (Facilities for users of roller sports equipment)
- BS EN 15312 (Free access multi-sports equipment)
- BS EN 16899 (Parkour Equipment)
- BS EN 16630 (Outdoor Fitness Equipment).



Site Information

Inspection Ref: 698998

Site Ref: 10869

Customer Order: N/A

Inspected: 13-November-2018 - 11:28 by Matt Hall RPII Annual Inspector (Outdoor)

Risk Assessment: M **12 Moderate Risk**



Location:

The site is partially overlooked by properties in the local community

Disabled Access:

Some accessible features; an area that presents difficulties to the majority of people with disabilities but in favourable circumstances and certainly in partnership can be accessed.



8 - Low Risk

Item: Gate - Pedestrian
Manufacturer: Owner/Operator
Surface Type: N/A
Equipment Compliance: N/A
Surface Area Compliance: N/A



Total Findings: 1

Finding 1

The opening between the gate and the post is less than 12mm and could trap users fingers - Adjust gate to ensure a 12mm opening all around

6 - Low Risk

Item: Fence - Bow Top
Manufacturer: Owner/Operator
Surface Type: N/A
Equipment Compliance: N/A
Surface Area Compliance: N/A



Total Findings: 2

Finding 1

There are a number of poles missing from the fence -
 Replace missing poles

Finding 2

There is surface corrosion present on the item - Consider
 treating and repainting the item



! 12 - Moderate Risk

Item: 1 Bay 2 Seat (Cradle)
Manufacturer: GL Jones
Surface Type: Rubber Tiles
Equipment Compliance: No
Surface Area Compliance: No



Total Findings: 12

Finding 1

There are significant gaps (over 30mm) between the surface and the edging or between the joints in the surface; these are large enough for a small foot to enter - Repair surfacing

Finding 2

The tiles can easily be lifted or are lifting along the edges of the area - Lift and re-glue tiles to secure

Finding 3

There are trip hazards at the edges of the surface - Reinstate surrounding surface levels to remove the trip points

Finding 4

The chain openings are in excess of the 8.6mm as recommended by BS EN 1176 - Monitor use

Finding 5

The chain links are worn in excess of 40% and require renewing - Replace worn chains

Finding 6

There is some wear to the shackles. - Monitor for any further deterioration and replace when 40% worn

Finding 7

The seat has minor damage or wear - Monitor for any further deterioration and replace as required

Finding 8

The swing seat frame is severely corroded and requires replacement - Replace seat

Finding 9

The chains are heavily corroded - Replace chains

Finding 10

The surfacing width under each seat is less than 1.75 metres and fails the requirements of BS EN 1176 Part 2 - Monitor use

Finding 11

The shackles are corroding - Monitor for any further deterioration and repair as required

Finding 12

There is some wear to the shackles. - Monitor for any further deterioration and replace when 40% worn



! 12 - Moderate Risk

Item: 1 Bay 2 Seat (Flat)
Manufacturer: GL Jones
Surface Type: Rubber Tiles
Equipment Compliance: No
Surface Area Compliance: No



Total Findings: 11

Finding 1

The bushes are showing signs of wear - Monitor for any further deterioration and replace as required

Finding 3

The shackles are corroding - Monitor for any further deterioration and repair as required

Finding 5

The chain openings are in excess of the 8.6mm as recommended by BS EN 1176 - Monitor use

Finding 7

The seat is severely damaged and requires replacing - Replace damaged seat

Finding 9

The seat eye bolts are worn - Replace bolts

Finding 11

The seats are too close to the frame as defined in BS EN 1176 Part 2; this is a low risk failure and no remedial action is required - Monitor use

Finding 2

There is some wear to the shackles. - Monitor for any further deterioration and replace when 40% worn

Finding 4

The chains are corroding - Monitor for any further deterioration and repair as required.

Finding 6

The chain links are worn in excess of 40% and require renewing - Replace worn chains

Finding 8

The seat fixings are corroded - Replace fixings

Finding 10

The surfacing width under each seat is less than 1.75 metres and fails the requirements of BS EN 1176 Part 2 - Monitor use



i 8 - Low Risk

Item: Site General
Manufacturer: Owner/Operator
Surface Type: N/A
Equipment Compliance: N/A
Surface Area Compliance: N/A



Total Findings: 4

Finding 1

It is recommended that information signs with emergency contact details are installed at each entrance/exit point to the playground - Provide in accordance with the recommendations set out in BS EN 1176

Finding 2

There is algae or moss growth on the surface resulting in slippery conditions - Clean and treat appropriately

Finding 3

There are gaps opening in between the tiles - Monitor for any further deterioration and repair as required

Finding 4

There is algae or moss growth on the surface resulting in slippery conditions - Clean and treat appropriately

i 8 - Low Risk

Item: Sculpture
Manufacturer: Not Identified
Surface Type: Grass
Equipment Compliance: N/A
Surface Area Compliance: N/A



Total Findings: 7

Finding 1

A number of fixing(s) have worked loose - Secure all loose fixings

Finding 2

The item has separated resulting in a foot entrapment/s in the item - Repair removing entrapment

Finding 3

There are areas or parts of the timber on the structure that have rotted - Replace all affected timbers

Finding 4

A timber section has collapsed - Repair

Finding 5

There is a potential crush point between the rotating sections - Adjust item to remove crush point

Finding 6

The top section is loose - Re secure fixings

Finding 7

Fungus or algae was found on the equipment - Remove fungi or algae from the equipment



Findings information

8 - Low Risk (Finding 1)

Item: Ancillary Items - Gate - Pedestrian
Manufacturer: Owner/Operator

Risk Level: L - Low Risk
Surface: N/A



Finding: The opening between the gate and the post is less than 12mm and could trap users fingers
Action: Adjust gate to ensure a 12mm opening all around

6 - Low Risk (Finding 1)

Item: Ancillary Items - Fence - Bow Top
Manufacturer: Owner/Operator

Risk Level: L - Low Risk
Surface: N/A



Finding: There are a number of poles missing from the fence
Action: Replace missing poles



i 6 - Low Risk (Finding 2)

Item: Ancillary Items - Fence - Bow Top
Manufacturer: Owner/Operator

Risk Level: L - Low Risk
Surface: N/A



Finding: There is surface corrosion present on the item

Action: Consider treating and repainting the item

i 9 - Low Risk (Finding 1)

Item: Swings - 1 Bay 2 Seat (Cradle)
Manufacturer: GL Jones

Risk Level: L - Low Risk
Surface: Rubber Tiles



Finding: There are significant gaps (over 30mm) between the surface and the edging or between the joints in the surface; these are large enough for a small foot to enter

Action: Repair surfacing



 8 - Low Risk (Finding 2)

Item: Swings - 1 Bay 2 Seat (Cradle)
Manufacturer: GL Jones

Risk Level: L - Low Risk
Surface: Rubber Tiles



Finding: The tiles can easily be lifted or are lifting along the edges of the area
Action: Lift and re-glue tiles to secure

 8 - Low Risk (Finding 3)

Item: Swings - 1 Bay 2 Seat (Cradle)
Manufacturer: GL Jones

Risk Level: L - Low Risk
Surface: Rubber Tiles



Finding: There are trip hazards at the edges of the surface
Action: Reinststate surrounding surface levels to remove the trip points



i 5 - Very Low Risk (Finding 4)

Item: Swings - 1 Bay 2 Seat (Cradle)
Manufacturer: GL Jones

Risk Level: V - Very Low Risk
Surface: Rubber Tiles



Finding: The chain openings are in excess of the 8.6mm as recommended by BS EN 1176 **Action:** Monitor use

! 12 - Moderate Risk (Finding 5)

Item: Swings - 1 Bay 2 Seat (Cradle)
Manufacturer: GL Jones

Risk Level: M - Moderate Risk
Surface: Rubber Tiles



Finding: The chain links are worn in excess of 40% and require renewing **Action:** Replace worn chains



i 6 - Low Risk (Finding 6)

Item: Swings - 1 Bay 2 Seat (Cradle)
Manufacturer: GL Jones

Risk Level: L - Low Risk
Surface: Rubber Tiles



Finding: There is some wear to the shackles.

Action: Monitor for any further deterioration and replace when 40% worn

i 6 - Low Risk (Finding 7)

Item: Swings - 1 Bay 2 Seat (Cradle)
Manufacturer: GL Jones

Risk Level: L - Low Risk
Surface: Rubber Tiles



Finding: The seat has minor damage or wear

Action: Monitor for any further deterioration and replace as required



! 12 - Moderate Risk (Finding 8)

Item: Swings - 1 Bay 2 Seat (Cradle)
Manufacturer: GL Jones

Risk Level: M - Moderate Risk
Surface: Rubber Tiles



Finding: The swing seat frame is severely corroded and requires replacement

Action: Replace seat



8 - Low Risk (Finding 9)

Item: Swings - 1 Bay 2 Seat (Cradle)
Manufacturer: GL Jones

Risk Level: L - Low Risk
Surface: Rubber Tiles



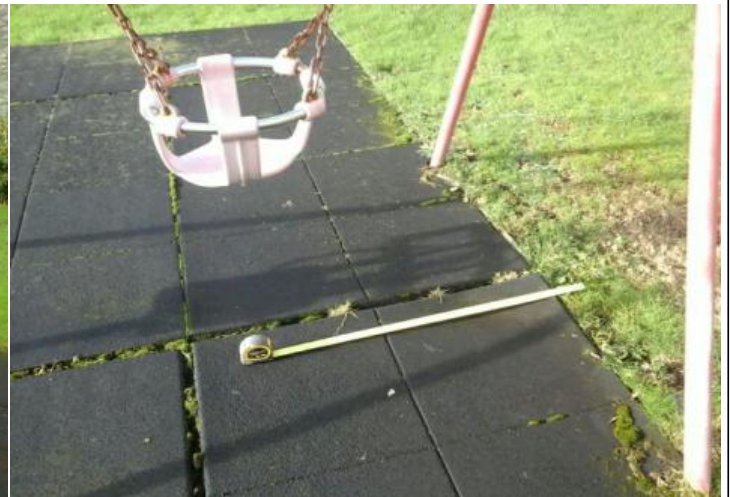
Finding: The chains are heavily corroded

Action: Replace chains

5 - Very Low Risk (Finding 10)

Item: Swings - 1 Bay 2 Seat (Cradle)
Manufacturer: GL Jones

Risk Level: V - Very Low Risk
Surface: Rubber Tiles



Finding: The surfacing width under each seat is less than 1.75 metres and fails the requirements of BS EN 1176 Part 2

Action: Monitor use



i 6 - Low Risk (Finding 11)

Item: Swings - 1 Bay 2 Seat (Cradle)
Manufacturer: GL Jones

Risk Level: L - Low Risk
Surface: Rubber Tiles



Finding: The shackles are corroding

Action: Monitor for any further deterioration and repair as required

i 6 - Low Risk (Finding 12)

Item: Swings - 1 Bay 2 Seat (Cradle)
Manufacturer: GL Jones

Risk Level: L - Low Risk
Surface: Rubber Tiles



Finding: There is some wear to the shackles.

Action: Monitor for any further deterioration and replace when 40% worn



i 4 - Very Low Risk (Finding 1)

Item: Swings - 1 Bay 2 Seat (Flat)
Manufacturer: GL Jones

Risk Level: V - Very Low Risk
Surface: Rubber Tiles



Finding: The bushes are showing signs of wear

Action: Monitor for any further deterioration and replace as required

i 6 - Low Risk (Finding 2)

Item: Swings - 1 Bay 2 Seat (Flat)
Manufacturer: GL Jones

Risk Level: L - Low Risk
Surface: Rubber Tiles



Finding: There is some wear to the shackles.

Action: Monitor for any further deterioration and replace when 40% worn



i 6 - Low Risk (Finding 3)

Item: Swings - 1 Bay 2 Seat (Flat)
Manufacturer: GL Jones

Risk Level: L - Low Risk
Surface: Rubber Tiles



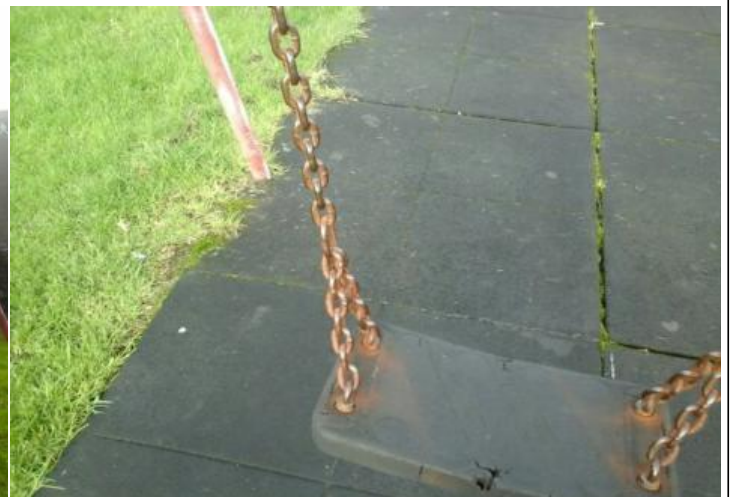
Finding: The shackles are corroding

Action: Monitor for any further deterioration and repair as required

i 6 - Low Risk (Finding 4)

Item: Swings - 1 Bay 2 Seat (Flat)
Manufacturer: GL Jones

Risk Level: L - Low Risk
Surface: Rubber Tiles



Finding: The chains are corroding

Action: Monitor for any further deterioration and repair as required.



 5 - Very Low Risk (Finding 5)

Item: Swings - 1 Bay 2 Seat (Flat)
Manufacturer: GL Jones

Risk Level: V - Very Low Risk
Surface: Rubber Tiles



Finding: The chain openings are in excess of the 8.6mm as recommended by BS EN 1176 **Action:** Monitor use



! 12 - Moderate Risk (Finding 6)

Item: Swings - 1 Bay 2 Seat (Flat)
Manufacturer: GL Jones

Risk Level: M - Moderate Risk
Surface: Rubber Tiles



Finding: The chain links are worn in excess of 40% and require renewing

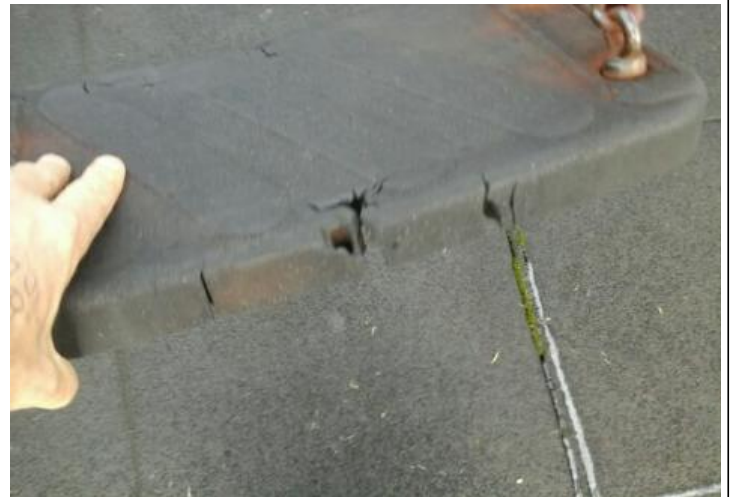
Action: Replace worn chains



i 8 - Low Risk (Finding 7)

Item: Swings - 1 Bay 2 Seat (Flat)
Manufacturer: GL Jones

Risk Level: L - Low Risk
Surface: Rubber Tiles



Finding: The seat is severely damaged and requires replacing

Action: Replace damaged seat



i 8 - Low Risk (Finding 8)

Item: Swings - 1 Bay 2 Seat (Flat)
Manufacturer: GL Jones

Risk Level: L - Low Risk
Surface: Rubber Tiles



Finding: The seat fixings are corroded

Action: Replace fixings

! 12 - Moderate Risk (Finding 9)

Item: Swings - 1 Bay 2 Seat (Flat)
Manufacturer: GL Jones

Risk Level: M - Moderate Risk
Surface: Rubber Tiles



Finding: The seat eye bolts are worn

Action: Replace bolts



i 5 - Very Low Risk (Finding 10)

Item: Swings - 1 Bay 2 Seat (Flat)
Manufacturer: GL Jones

Risk Level: V - Very Low Risk
Surface: Rubber Tiles



Finding: The surfacing width under each seat is less than 1.75 metres and fails the requirements of BS EN 1176 Part 2
Action: Monitor use

i 4 - Very Low Risk (Finding 11)

Item: Swings - 1 Bay 2 Seat (Flat)
Manufacturer: GL Jones

Risk Level: V - Very Low Risk
Surface: Rubber Tiles



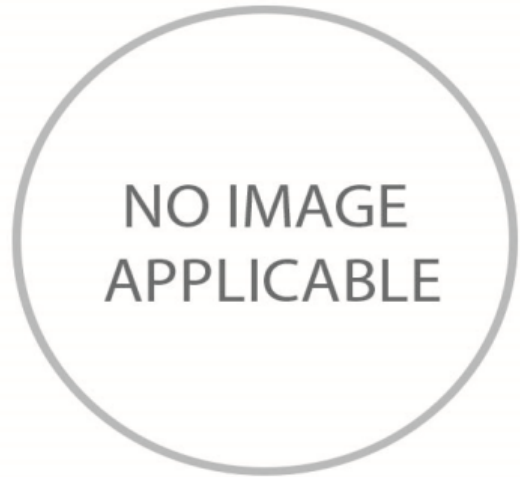
Finding: The seats are too close to the frame as defined in BS EN 1176 Part 2; this is a low risk failure and no remedial action is required
Action: Monitor use



i 2 - Very Low Risk (Finding 1)

Item: Ancillary Items - Site General
Manufacturer: Owner/Operator

Risk Level: V - Very Low Risk
Surface: N/A



Finding: It is recommended that information signs with emergency contact details are installed at each entrance/exit set out in BS EN 1176 point to the playground
Action: Provide in accordance with the recommendations

i 8 - Low Risk (Finding 2)

Item: Ancillary Items - Site General
Manufacturer: Owner/Operator

Risk Level: L - Low Risk
Surface: N/A



Finding: There is algae or moss growth on the surface resulting in slippery conditions
Action: Clean and treat appropriately



i 6 - Low Risk (Finding 3)

Item: Ancillary Items - Site General
Manufacturer: Owner/Operator

Risk Level: L - Low Risk
Surface: N/A



Finding: There are gaps opening in between the tiles

Action: Monitor for any further deterioration and repair as required

i 8 - Low Risk (Finding 4)

Item: Ancillary Items - Site General
Manufacturer: Owner/Operator

Risk Level: L - Low Risk
Surface: N/A



Finding: There is algae or moss growth on the surface resulting in slippery conditions

Action: Clean and treat appropriately



 6 - Low Risk (Finding 1)

Item: Other - Sculpture
Manufacturer: Not Identified

Risk Level: L - Low Risk
Surface: Grass



Finding: A number of fixing(s) have worked loose

Action: Secure all loose fixings



i 8 - Low Risk (Finding 2)

Item: Other - Sculpture
Manufacturer: Not Identified

Risk Level: L - Low Risk
Surface: Grass



Finding: The item has separated resulting in a foot entrapment/s in the item

Action: Repair removing entrapment



 8 - Low Risk (Finding 3)

Item: Other - Sculpture
Manufacturer: Not Identified

Risk Level: L - Low Risk
Surface: Grass



Finding: There are areas or parts of the timber on the structure that have rotted

Action: Replace all affected timbers



 8 - Low Risk (Finding 4)

Item: Other - Sculpture
Manufacturer: Not Identified

Risk Level: L - Low Risk
Surface: Grass



Finding: A timber section has collapsed

Action: Repair



i 8 - Low Risk (Finding 5)

Item: Other - Sculpture
Manufacturer: Not Identified

Risk Level: L - Low Risk
Surface: Grass



Finding: There is a potential crush point between the rotating sections

Action: Adjust item to remove crush point



 8 - Low Risk (Finding 6)

Item: Other - Sculpture
Manufacturer: Not Identified

Risk Level: L - Low Risk
Surface: Grass



Finding: The top section is loose

Action: Re secure fixings



 5 - Very Low Risk (Finding 7)

Item: Other - Sculpture
Manufacturer: Not Identified

Risk Level: V - Very Low Risk
Surface: Grass



Finding: Fungus or algae was found on the equipment

Action: Remove fungi or algae from the equipment